

Shonan Health Innovation Park

The logo for iPark Shonan features a cluster of five colored squares (dark blue, light blue, grey, light blue, dark blue) in the upper left. Below them, the word "iPark" is written in a large, bold, dark blue sans-serif font, with the "i" being lowercase. Underneath "iPark", the word "Shonan" is written in a smaller, dark blue sans-serif font.

iPark
Shonan



Today's point

Shonan iPark Overview

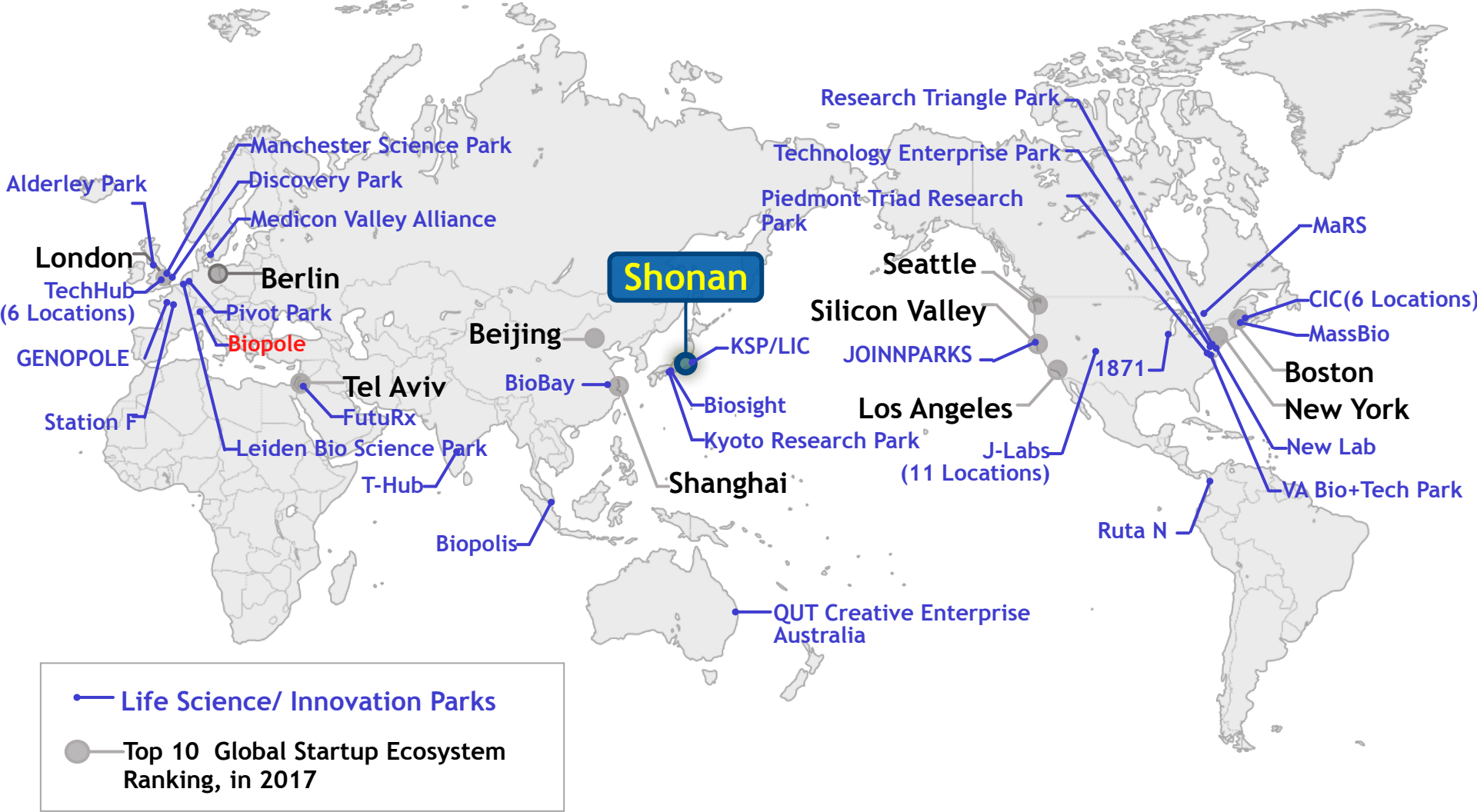
Vision & Mission

Strategic focus

Innovation Support Services

CYBERDYNE Robot Suits Technology

Life science research bases are being consolidated into "hot spots"

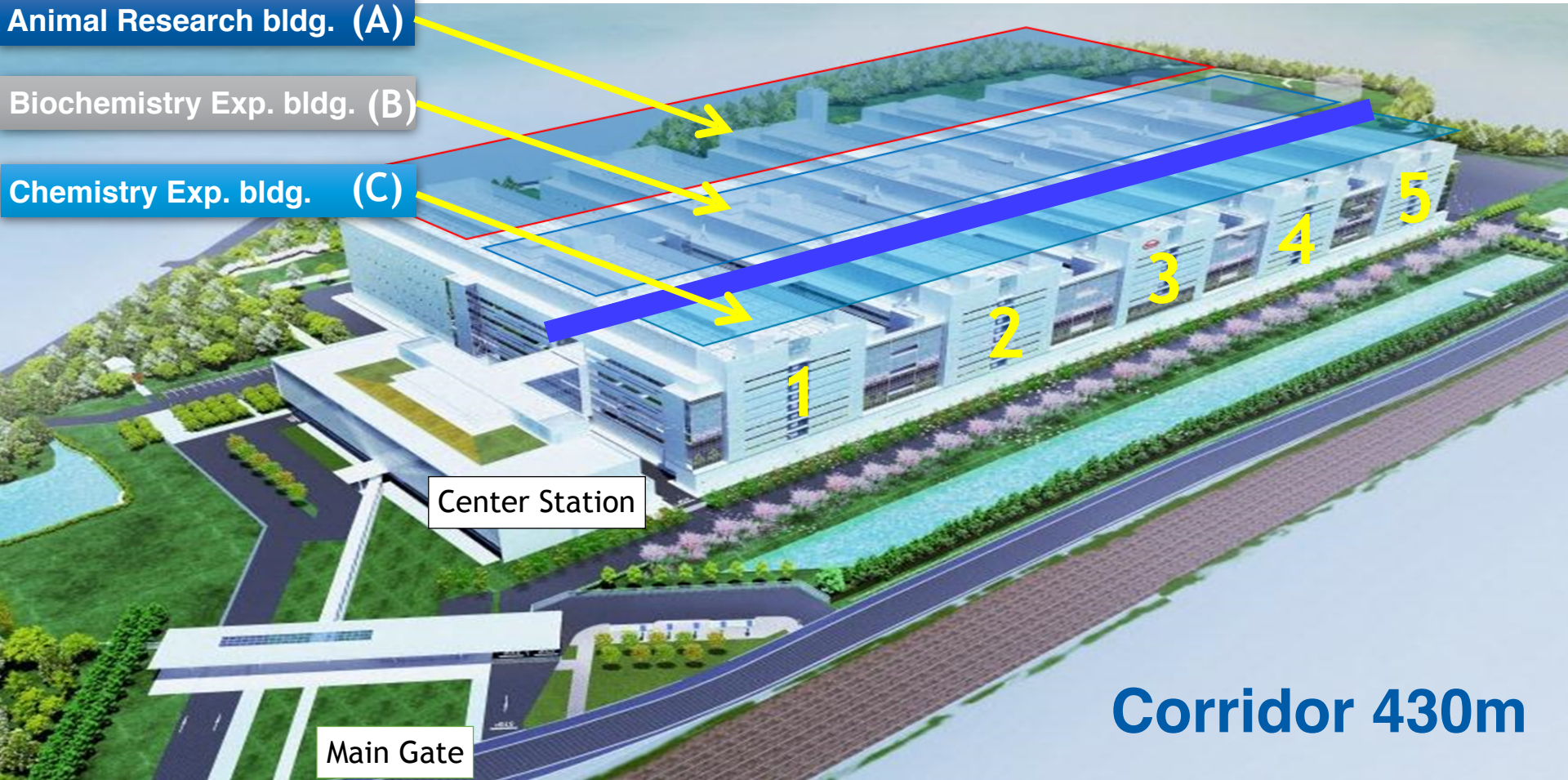


Shonan iPark Overview

Animal Research bldg. (A)

Biochemistry Exp. bldg. (B)

Chemistry Exp. bldg. (C)



Center Station

Main Gate

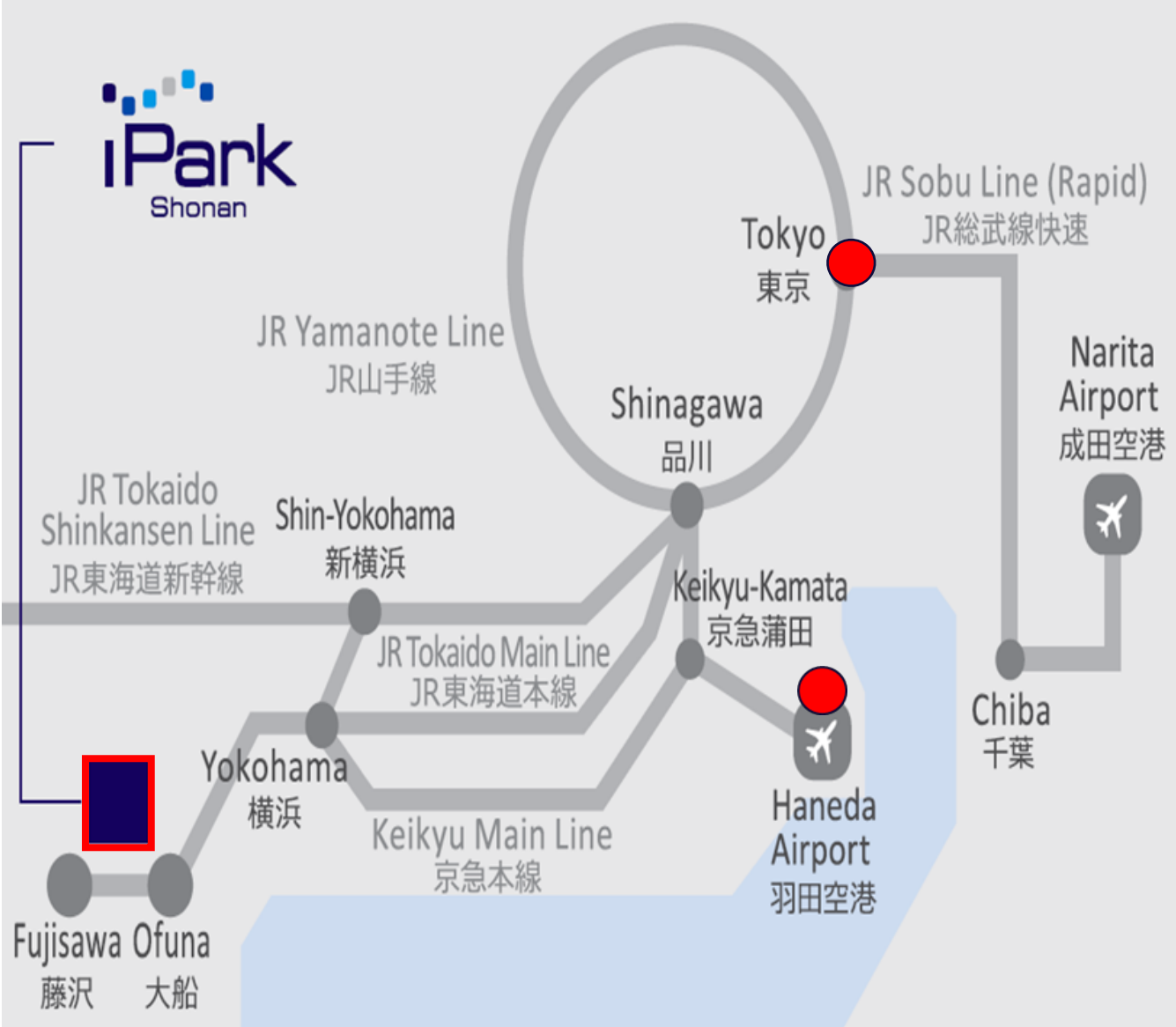
Corridor 430m

Approx. 140,000m² laboratory

Approx. 30,000m² office & meeting space

iPark is close to Tokyo

1 hour from Tokyo station , from Haneda International airport!



Vision & Mission

Vision

Social implementation of innovative ideas

Mission

Build a Life-science Ecosystem that is open to the world

Ecosystem

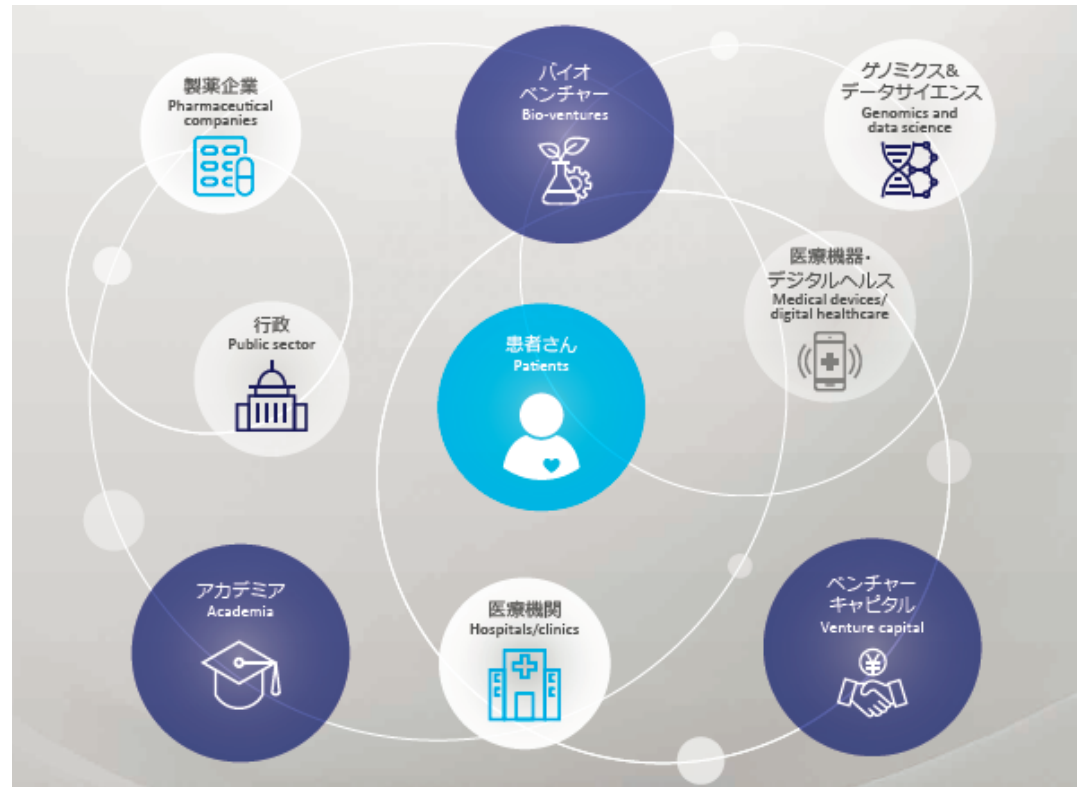
A framework to prosper together in product development and commercial activities

- Inter-business
- interdisciplinary and international collaboration

iPark's future ecosystem

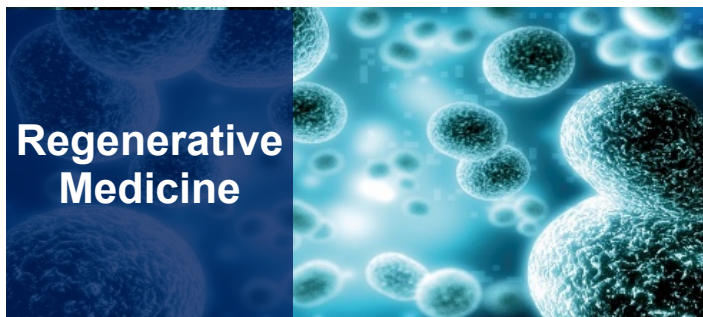
- Public, private and academic hub
- Transform innovative ideas into reality
- Full cooperation

Build an **Ecosystem** to propel health innovation



Strategic Focus

iPark will seek solutions to issues facing society in the following four areas.



4 focus areas



Platform

To realize the fusion of healthcare and IT / AI

To accelerate innovative and advanced research
by enhancing drug discovery platforms

Shonan iPark Tenant List



Shonan iPark Tenant List

Pharmaceuticals



Biotech



Research and Development Support



New Modality



Research Equipment / Medical Devices



AI / IoT / Robotics



Others



2018.4-2019.3

iPark Achievements- A lot of business was born in one year of opening

Patents
More than

40

Business alliances
More than

220

Fund raising
More than

25 million

euro

Cooperation among
tenants
More than

30

Visitors
More than

14,000

Employees
More than

1,500

One of Japan's largest research facilities

- **Your research can start from Day 1**

fully provided with research/office facilities (including P2, RI)

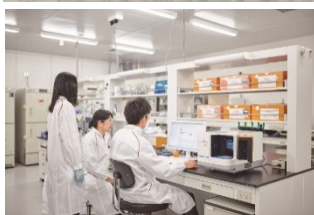
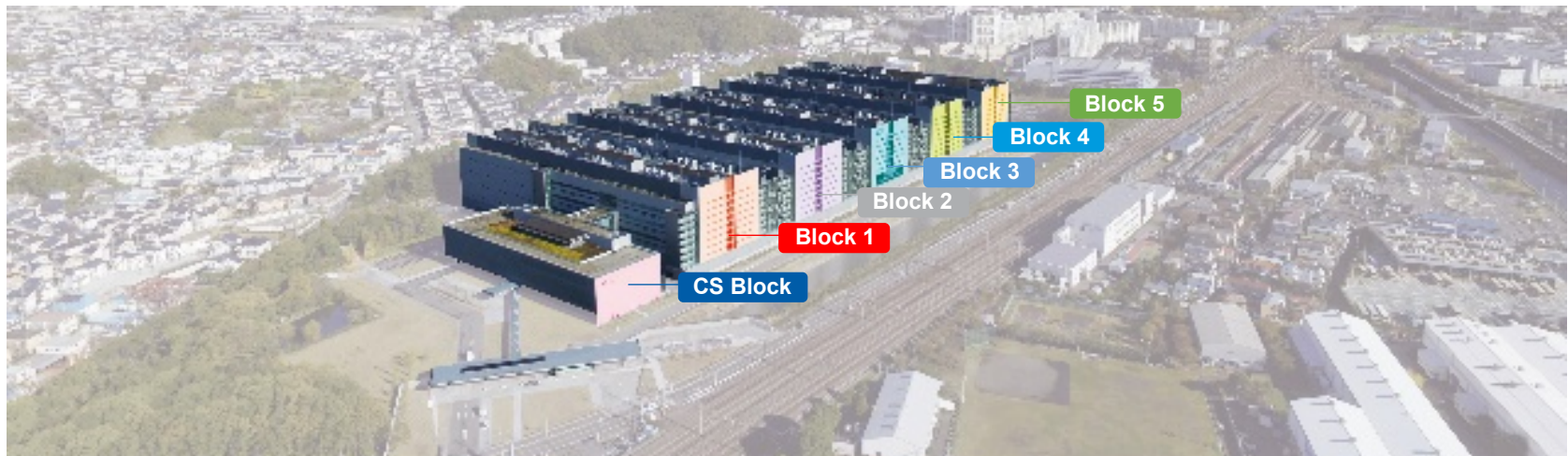
- **Extensive range of shared experimental equipment**

installed with ;

- . general-purpose equipment (e.g. draft apparatus, safety cabinet, centrifuge)

- . advanced apparatus (e.g. real-time PCR, flow cytometer, confocal laser scanning microscope, high-content screening equipment)

- **All labs are registered and guideline compliant**

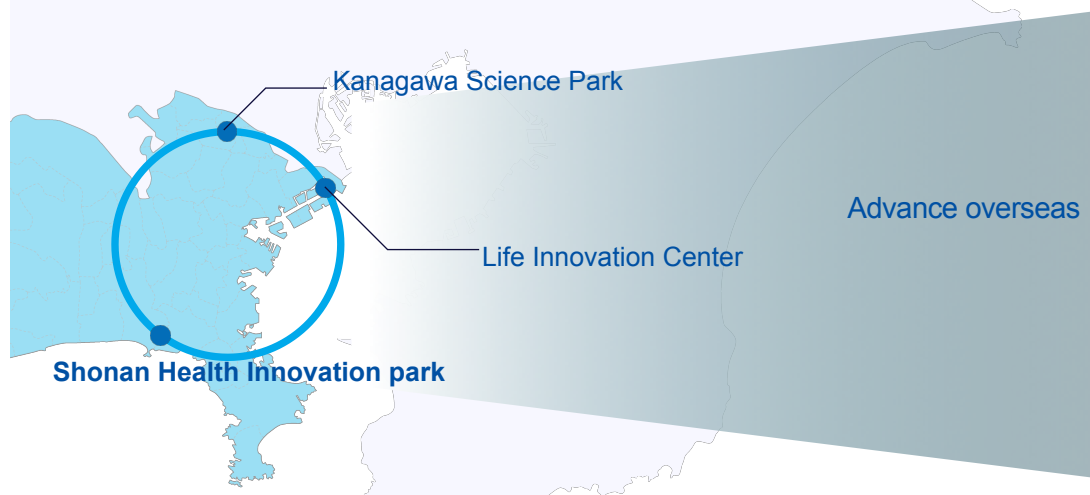


Innovation Support Service Line up

- **Shonan iPark Science Mentor**
- **Shonan iPark VMS (Venture Mentoring Service)**
- Consulting on pharmaceutical affairs/intellectual property
- Drug discovery consulting/pre-clinical research support
- **Shonan iPark Membership**
- **Networking events**
- Pitch events



iPark is the connection between Kanagawa pref. and the world



- Working together closely with other science parks
- Becoming a distinctive, special research park
- Offering wide and diverse opportunities to businesses located at iPark

Amenities and facilities

Amenities



Auditorium



Conference room / area

Communication Space



Japanese style



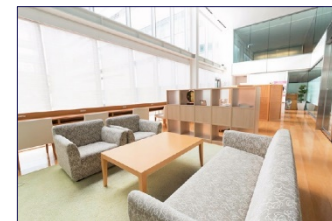
Cafeteria



Bar



Gym



Lounge



Shonan style

Community service

iPark opens part of its premises and facilities for the use of by the local community, to promote residents' interaction with science and nature.



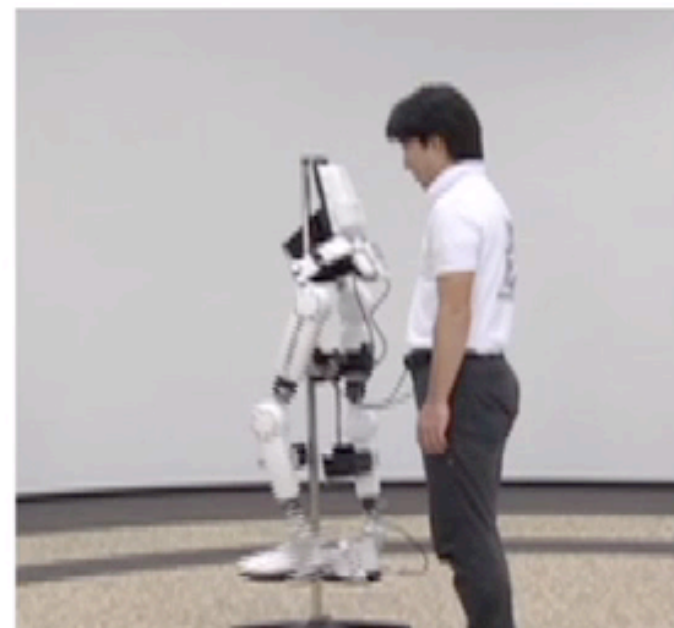




Innovative Technology of HAL

HAL can be controlled according to Hu

**His brain controls HAL
without movement.**



Our contribution : Dramatic improvement *The medical impact of HAL*

Locomotion training using voluntary driven exoskeleton (HAL) in acute incomplete SCI

Oliver Cruciger, MD, Martin Tegenthoff, MD, Peter Schwenkreis, MD,

Thomas A. Schildhauer, MD, Mirko Aach, MD

July 28, 2014

After HAL Therapy

- * 34-year-old man
- * Traumatic thoracic spinal cord injury fracture: vertebral and right acetabulum
- * The initial ASIA Impairment Scale: incomplete motor T10
- * HAL treatment started 77 days post trauma
- * Throughout 12 weeks of locomotion training
- * Walking Index for Spinal Cord Injury II (WISCI-II) score : **from 8 to 18** video;

Range Definition of WISCI-II: 0 ~ 20(max)

WISC-II: **8**



Beginning Stage

He always needs helper !

WISC-II: **18**



Final Stage

International Medical journal

July 28, 2014

Neurology

SHONAN Robocare Center

Mt. FUJI





iPark

Shonan